



PILGRIM LUTHERAN CHURCH

44 CHAPEL ROAD – KENMORE, NY 14217

(716) 875-5485

www.pilgrimkenmorecms.org

A Congregation in Mission, Community and Service

PILGRIM'S PROGRESS

AUGUST 2021

PASTOR: Rev. Ben Eder

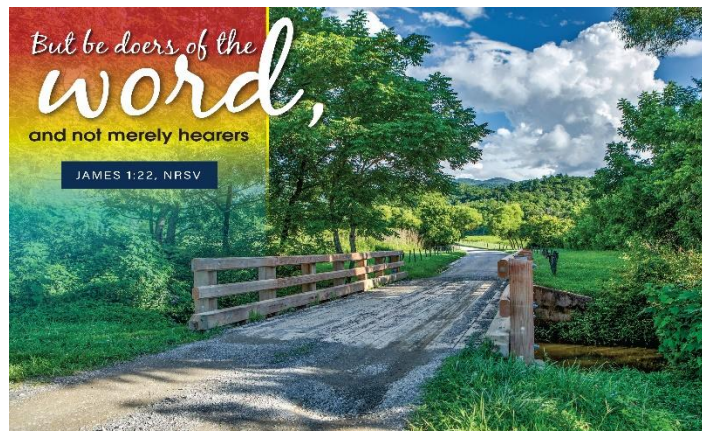
SUNDAY SCHOOL: 9:00 AM

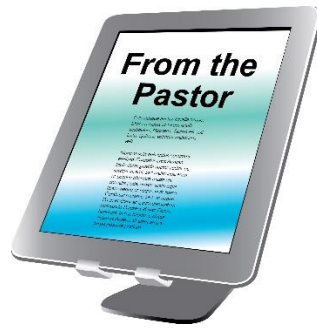
EDITOR: Mary Werth

TUESDAY BIBLE STUDY: 9:30 AM

ASSOC. EDITOR:

WORSHIP: 10:00 AM





Over the past year or so there has been a spate of articles by writers and commentators about a general exodus from the church. Certainly Covid-19, and the problems associated with it, accelerated that trend which existed even before the onset of the virus.

What should our response as Christians be? To wring our hands and say, “Woe is me?” What if Churchill had said during the London Blitz, “We surrender; the Germans are just too much for us!” He wouldn’t be celebrated as the great leader he is today.

These developments have led me to ponder the power of God’s Word. Time and again, the Holy Scriptures remind us of the power of God’s Word – to accuse and condemn us of sin (the Law) and the promise of God to forgive the sins of the repentant and save sinners for Jesus’ sake (the Gospel). For example, the Apostle Paul writes in Romans, Chapter One: *¹⁶ For I am not ashamed of the gospel, for it is the power of God for salvation to everyone who believes, to the Jew first and also to the Greek. ¹⁷ For in it the righteousness of God is revealed from faith for faith,^[e] as it is written, “The righteous shall live by faith.”*

Also, God promises us that whenever the Word is proclaimed, it is not without effect: *“¹⁰ As the rain and the snow come down from heaven, and do not return to it without watering the earth and making it bud and flourish, so that it yields seed for the sower and bread for the eater,¹¹ so is my word that goes out from my mouth: It will not return to me empty, but will accomplish what I desire and achieve the purpose for which I sent it.”* – Isaiah 55

What are we to make of these promises in light of recent developments? In view of the Parable of the Sower *Matthew 13* we must admit that the soil is hard in some places while it is more receptive to the Word of God in other settings. In the West (particularly North America and Western Europe), the Religion of Secularism has largely taken over and apathy has become rampant even among those who at least appeared to be faithful. By contrast, there is great hunger for God’s Word and strong church attendance in much of Africa, Asia, and South America. Luther warns that wherever there is ingratitude the Word of God will go where it is welcomed and God will bless that place. The implication is that God will remove his blessing from that house or place that no longer has use for him.

Whether the soil is soft or hard, let us not lose our faith in the power of God’s Word to convict hardened hearts and to console troubled consciences. The power is in God’s Word, and not in us. Let us sow the seed of his Word faithfully, and he will take care of the results.

+ Pastor Ben Eder



Mike Eder	Aug. 1
Gary Smith	Aug. 11
Carol Obot	Aug. 22
Adaline Trimmer	Aug. 23
Eric Fellner	Aug. 26

Aug. 26 Tim & Sharon McGuan



The miracle of summer

A team of Sunday school teachers faced boisterous youngsters on Rally Day, the start of a new education year. Because kids were reuniting after a break, they were eager to chat about vacations. To restore order, a teacher asked the children to take turns sharing a favorite Bible verse, story or miracle. One, who still had summer on the brain, exclaimed, "I like the time when everybody loafes and fishes!"



ESTHER CIRCLE

Our August gathering is on Monday, August 9th, at 12:30 pm AT THE CHURCH. All women of Pilgrim are welcome to attend. We will have a business meeting and then we will work on gluing the meal prayer cards for the Eastern District LWML Retreat in September. Along with this, we have several items to discuss: the raffle, Princess cards for Lighthouse Ministry and the fellowship schedule. Everyone's presence is needed.

The Fellowship time is going well. We will be posting a list for 2 volunteers every other Sunday to help host. This is a wonderful time for connecting and conversation. In order to continue fellowship, we need people in the congregation to help! Please sign up to serve. Thank you!

REMINDER! The Mites (loose change) collection is ongoing. There is a container near the front door of the church to place your donations for LWML grants. Cancelled stamps cut with 1/2-inch border frame go to Sharon McGuan to help purchase Bibles for prisoners. Old printer ink cartridges give to Pat Watkins and Dash's tapes to Sue Holway. Thank you for your support!

We pray 🙏 you enjoy this last full month of Summer. Continue to stay safe and healthy. God Bless!

Carol Obot & Sue Holway



"Teaching a child not to step on a caterpillar is as valuable to the child as it is to the caterpillar."
—Bradley Miller

* * *

"The world goes on because of those who close their lips when they meet hostility from others."
—Rebbe Nachman of Breslov

* * *

"Prayer is a moment of incarnation — God with us. God involved in the details of my life."
—Paul E. Miller

Fellowship Time



Definition of *fellowship*

: community of interest, activity, feeling, or experience

intransitive verb

: to join in fellowship especially with a church member

The Following Sundays for Fellowship Will Be:

Sunday, August 8

Sunday, August 22

Beginning in September there will be a Sign-Up Sheet for other members to participate.

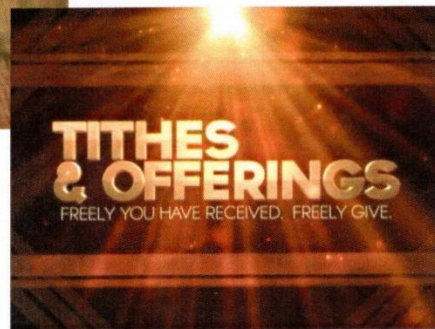
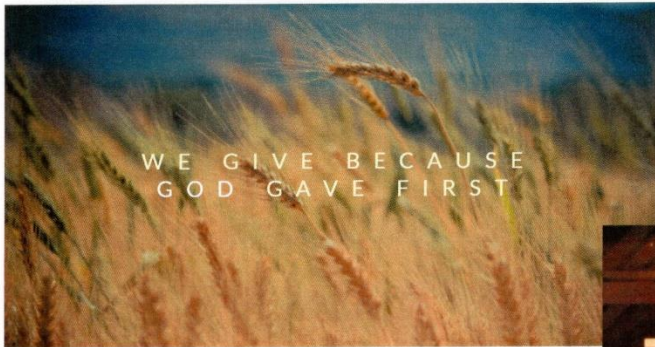
Keeping It Simple!

Thank-You Esther Circle for organizing Fellowship This Summer.



How do we respond to God's call to serve and love our neighbors?

We faithfully steward the gifts God has so abundantly given to us. Although some think of stewardship as only a financial response to God's love, stewardship encompasses so much more than money. It is about how we use all that God has entrusted to our care — our time, our talents and our treasures — to love God and our neighbors, both inside and outside of the church walls and our homes.



<https://secure.usaepay.com/pay/9nkt6jj6js3wnvhgb/2Z0kggt3>

Kenmore Presbyterian Church Food Pantry

The Board of Deacons of Kenmore Presbyterian Church Offers a Food Pantry

Second Saturday of the month from 9 a.m. to 11 a.m.

Right now they are bagging a variety of items and handing out the bags outside in the parking lot.

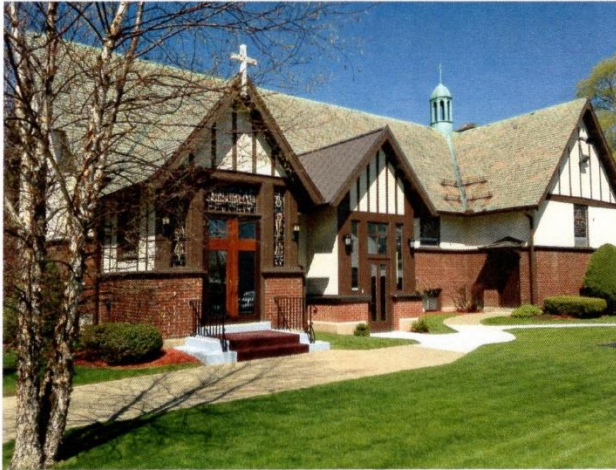
Last Thursday of the month from 12 noon to 2 p.m.,

We offer a Soup Luncheon. **The Soup Kitchen is ON PAUSE for now**



Fellowship and Pot Faith Sundays
All donations will be collected by
Esther Circle

Pilgrim's 100th Anniversary will be in 2022!



Next March Pilgrim celebrates our 100th Anniversary!! How exciting that Pilgrim is still a part of the Community -100 years later!!!

Let's join together in the following months to look back and reminisce, along with looking forward to insuring another 100 years.

It will take a lot of planning between now and March 2022 for our Celebration, but we can do it with many hands working together.

At this time, we are officially forming a Planning Committee, with Dianne Wuerch as Chairperson.

She has already outlined our needs into smaller responsibilities so no one will feel overwhelmed. Please consider being a helping hand.

Anyone who is interested to be on the Planning Committee, please contact:

Mike Wuerch Council President mikewuerch@gmail.com or
Dianne Wuerch diannefeyeswuerch@gmail.com



FEATURED PRODUCTS

Sweets & Snacks with a Pop of Color

Bright & cheery, fruity & flavorful—these delicious treats are sure to catch the eye of new & existing supporters!



GUMMI BEARS -1 LB BAG



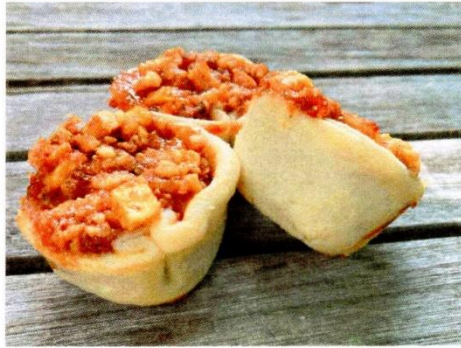
FRUIT & NUT MIX – 1 LB BAG



HEALTHY MIX -1 LB BAG



SWEET & SALTY TRAIL -1 LB BAG



Apple Walnut Mini Pies

Terri Lynn's Black Walnut Pieces are amazing in this mini recipe. (You could use light walnuts too.)

INGREDIENTS

- 1 cup brown sugar
- 2 large eggs
- 2 tbsp melted butter
- 1 tsp vanilla extract
- 1 tsp ground cinnamon
- ¼ tsp salt
- 1 cup Terri Lynn Black Walnut Pieces (finely chopped)
- 1 cup Apples (cored, peeled & finely chopped)
- Store bought pie crust

DIRECTIONS

- To prepare crusts, unwrap pie crust, lay flat. Use a cutter or a glass to cut circles. Press one circle in each cup of a lightly greased mini muffin pan. Chill.
- Preheat oven to 350 degrees F.
- In a large mixing bowl, mix together the brown sugar, eggs, melted butter, vanilla, cinnamon, and salt until well combined. Stir in the chopped walnuts and apple.
- Remove the crusts from the refrigerator and spoon the filling into each cup of over the crust.
- Bake the pies at 350 degrees F for about 15-20 minutes or until golden brown around the edges. Cool, then run a sharp knife around edges of crust to remove.

Share All Our Recipes

Terri Lynn's Signature nuts, snack mixes, and chocolates are delicious on their own; but they also make great ingredients for your homemade, tasty creations. Check out these recipes and share them with supporters who purchase from your fundraiser too.



Your Fall Ordering Packet Will Be Arriving Soon

Look for your 2021 fall order forms, fundraising selling materials and more to arrive in your mailbox SOON!

ORDER ANYTIME-DAY OR NIGHT!

WITH OUR ONLINE STORE!!

<https://pilgrimesthercircle.terrilynn.com>

All profits are used to support local charities such as Ken-Ton Meals on Wheels, Local Church Food Pantries, Lutheran Bible Translators, Lutheran Hour Ministries plus many others. Please help us support them.

Thank you!



Lutheran
Women
in Mission

NEWS RELEASE

FOR IMMEDIATE RELEASE

June 26, 2021

Lutheran Women's Missionary League Convention in Lexington, Kentucky LWML 39TH BIENNIAL CONVENTION HIGHLIGHTS

The Lutheran Women's Missionary League (LWML) welcomed 2,787 people to the LWML Convention in Lexington, Kentucky, June 24–27, 2021, under the theme “Running the Race ... Looking to Jesus.” The convention theme was based on Hebrews 12:1–2. The voting body for the 39th Biennial Convention of the LWML adopted a \$2,150,000 mission goal for the 2021–2023 biennium. This goal, by the grace of God, will fund 28 mission grants as women and men respond in prayer and offerings during the next two years. LWML chose to support the following mission grants, pledging their support with prayers and mites (offerings) given over the next biennium:

1. Deaconess Ministry Dakota Boys and Girls Ranch — Dakota Boys and Girls Ranch, \$81,680
2. Healing the Invisible Wounds of War through Horses — Spirit Warrior, Central Maine, \$95,000
3. Thirst to Learn: Bible Books for Africa's Children — Lutheran Heritage Foundation, \$100,000
4. Making the Next Generation of Disciples for Life — LCMS Life Ministry, \$92,000
5. Helping Hands for Lutheran Deaf Outreach — Lutheran Deaf Outreach, \$50,000
6. Hope of Christ for Cancer Patients — Phil's Friends, \$70,000
7. Training Pastors to Serve the Church in Russia — Lutheran Theological Seminary, Novosibirsk, Siberia, \$100,000
8. Light of Christ in Eastern Europe — Mission Central, \$56,000
9. Propelling the Gospel — LAMP Ministry, Inc., \$65,000
10. Educating Pastors in Africa — Mission Central, \$100,000
11. Redeeming Life Maternity Home, Illinois Expansion — Redeeming Life Outreach Ministries, \$100,000
12. Mercy Medical Care for Tanzania — Mwaui Lutheran School and Community, \$68,182
13. Gospel Outreach to Women and Children in Mongolia — Lutheran Hour Ministries, \$100,000
14. Caring for and Sharing Christ with Hurting People — Concordia Seminary, St. Louis, \$100,000
15. The Littlest and Least of These, Dallas, Texas — St. Paul Lutheran Church and Christian Academy, \$42,000
16. Bring the Inner-City Children to Camp — Lutheran Valley Retreat, Colorado, \$25,000
17. Spiritual and Physical Food for Children of Peru — La Mision Luterana del Peru, \$56,750
18. “Ends of Earth” Scholarships — Mission Opportunities Short Term (MOST) Ministries, \$50,000
19. Sharing Jesus' Love in India — Lutheran Braille Workers, \$100,000
20. Mission & Outreach to the Least of These — Victory Lutheran Church, K. I. Sawyer Community, \$51,356
21. Mercy House Belize Lutheran Campus — Belize Mission Society, \$100,000
22. Ministry Vehicle Fund, Ethiopia, and Sierra Leone — Lutheran Bible Translators, \$70,000
23. Showing God's Love in the International District, Albuquerque, New Mexico — God Cares About You Mission, \$98,000
24. Reaching the Homebound with God's Word — Lutheran Ministries Media, Inc. (DBA Worship Anew), \$100,000
25. Missionaries to America Project — Mission Nation Publishing, \$88,000
26. Strengthening the Lutheran Mission to Kuna, Idaho — Friendship Celebration Lutheran Church, \$100,000
27. Expanding God's Love in Uganda — LCMS Office of International Mission, Africa Region, \$92,000
28. Christ-Centered Materials for Hmong Language School and Outreach — St. Paul Hmong Outreach Ministries, \$70,364

Voting Body Elects New Leaders

Vice President of Christian Life: Susan Brunkow

Recording Secretary: Brenda Piester

Vice President of Communication: Kathy Pavelock

Pastoral Counselor: Rev. Gary Piepkorn

Vice President of Gospel Outreach: Karen Morrison

Nominating Committee: Kaye Wolff, Chairman; Lois Teinert, Janis McDaniels, Lisa Asmus, Melissa Salomon

The Lutheran Women's Missionary League (LWML) is an official women's auxiliary of The Lutheran Church—Missouri Synod. As Lutheran Women in Mission, we joyfully proclaim Christ, support missions, and equip women to honor God by serving others.

LWML news releases are available at lwml.org

Contact:

Susan Donnelly
Public Relations Director
susan.donnelly@lwml.org

LWML Office

801 Seminary Place Suite L010
St. Louis, Missouri 63105
800-252-5965

DEMAND FOR AUDIO BIBLE RADIOS INCREASES IN MALAYSIA

COVID-19 cases continue to increase in many Asian countries. As a result, the government in Malaysia has continually extended its lockdown and currently bans public activities, meetings, and social and religious gatherings in the capital of Kuala Lumpur and several surrounding states. In addition, inter-state travel within the country is also prohibited.

While these restrictions continue to keep LHM-Malaysia staff from being on the frontlines sharing the Gospel, they are equipping Christian workers to do outreach in remote areas of the country with the critical resources people need. One of its most impactful ministries continues to be the distribution of audio Bible radios available in several languages.

Loading these devices with an audio Bible, Lutheran Bible courses, sermons, teaching content, songs, and hymns allows LHM-Malaysia to reach indigenous people who do not have access to a Christ-centered community or biblical teachings through a local church. The interest and demand in this project continue to steadily increase since its launch on Easter Sunday 2019.

Working through ministry partners such as Kapit Lighthouse and Open Doors, LHM-Malaysia distributed more than 1,500 units in just the month of March alone. These radios are having a significant impact on people like Mariam, Robin, and Robert.

Mariam has been ordering many radios to give to her friends and relatives. Recently she gave one of the radios to her brother, Robin, who is bedridden because of paralysis. Robin grew up as a Christian, but now does not believe in Jesus. Last Christmas, he invited many friends and relatives to come to his house for a feast. Mariam took this opportunity to attend with other Christian relatives and they had a lot of fun singing carols and sharing stories. Mariam also played the praise and worship songs in the Malay language that are included on the LHM audio Bible. Through the music, the Holy Spirit touched Robin's heart. He liked hearing the songs and says that he has missed listening to them. Now, as he lies in bed, Mariam turns on the radio and plays the audio Bible and songs for him to listen. She is grateful that God has touched Robin's heart through the ministry of

the LHM audio Bible radio.

Robert is a Christian leader who serves as the superintendent of a school in his region. Since receiving his personal unit, Robert has ordered 50 more to be distributed to other believers and non-believers. He is grateful to LHM-Malaysia for providing these audio Bible radios to people at an affordable price.

"I first saw this device when my pastor gave it as a present to my father-in-law," says Robert. "I could see how it will benefit many people, particularly those who are not able to read due to failing eyesight or illiteracy. Besides owning a set myself, I quickly bought one more for my elderly mother. I strongly encourage others to own a set, too, simply because I have been so blessed by it. I am growing more in the Lord through the hearing of His Word."

Robert listens to the audio Bible radio while driving, resting at home, or working in the office. His family members bring their units while tapping rubber trees, at the paddy fields, and in their orchards and enjoy memorizing the Scriptures and listening to the praise and worship songs.

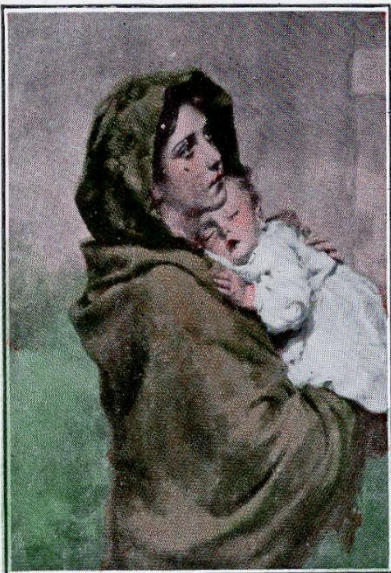
"We pray that through the distribution of these audio Bible radios, God will strengthen the hearts of the believers and cause them to return to Him," says the director of LHM-Malaysia. "For those who are not yet believers, may faith arise in their hearts and may the Holy Spirit touch them so they will open their hearts to receive Jesus as their Lord and Savior."



BUFFALO ENQUIRER – MARCH 25, 1922

LUTHERANS OF KENMORE ORGANIZE CONGREGATION

Lutherans of Kenmore have organized a congregation, with W. Mackensen, A. Kretchmar and the Rev. F. J. Muhlhauser named to draw up a constitution. G. Eisenberger and R. Sprouls will find a site for a church.



For the promise is unto you and to
your children. Acts 2: 39.

We herewith apply for enrollment of
our child John Frederick Muhlhauser

born March 29 1925

baptized April 19 1925

on the

Cradle Roll

of Pilgrim Lutheran Sunday School

Parents Pastor F. J. Muhlhauser

Address 56 W. 9th St. Kenmore, N.Y.

Moved away

This is the record for the son of Pastor and Mrs. Muhlhauser.



FAITHFUL followers

Play these fun variations
on Follow the Leader —
and remember to
follow Jesus
wherever you go!

What you need:

- Bean bags
- Tables, chairs,
pillows
- Painter's tape

What you do:

Players line up behind the
Leader, who moves around in
various ways. Followers must
copy the Leader's movements
faithfully. Try these variations:

1. Players must balance a
bean bag on their head as
they follow the Leader.
2. Set up an obstacle course,
and follow the Leader by
crawling under tables and
chairs, hopping over pillows
and so on.
3. With tape, make zigzags
and curves on the floor.
Then follow the Leader as
if walking on a tightrope.
4. The Leader designates types
of terrain to imagine, such
as mud, snow, ice and a
mountain.
5. Also try animal movements,
mirrored movements and
dancing movements.

PUZZLE

No kidding

Whatever our age, God calls us to model holy living for others.



*Directions: Match the animal young with its parent. Then write the letter
answers in order below to complete 1 Timothy 4:12, NIV.*



- | | |
|-----------------|-------------------|
| 1. ___ bear | 9. ___ monkey |
| 2. ___ frog | 10. ___ platypus |
| 3. ___ owl | 11. ___ alligator |
| 4. ___ horse | 12. ___ giraffe |
| 5. ___ kangaroo | 13. ___ goose |
| 6. ___ deer | 14. ___ swan |
| 7. ___ goat | 15. ___ dog |
| 8. ___ fish | |

- | | |
|------------|--------------|
| A. fry | I. hatchling |
| B. fawn | K. foal |
| C. gosling | L. owlet |
| D. cub | M. puggle |
| E. kid | N. joey |
| F. cygnet | O. polliwog |
| G. infant | P. puppy |
| H. calf | |

"_on't let any_ne _oo_ down o_ you _ecaus_
you _re youn_, but set an exa_ple for the bel_evers
in spec_, in _onduct, in love, in _aith and in _urity."

1 TIMOTHY 4:12, NIV

Answer: D, O, L, K, N, B, E, A, G, M, I, H, C, F, P

**THE DEADLINE FOR SUBMISSIONS FOR THE
SEPTEMBER NEWSLETTER IS AUGUST 25TH.**